



## Shelley College Curriculum Aims

Name of document writer	Andy Hewitt
Last updated	September 2023
Review date	September 2024



## Implementation & Principles

Through curriculum implementation we foster our ethos of **‘Valuing people, Supporting Personal Best’** which is underpinned by respect & commitment.

### Valuing People

- We ensure students to progress in all areas, regardless of ability, disability, gender, race or sexuality;
- offer students the chance to achieve, have a ‘can do’ attitude and have high aspirations and ambition;
- offer students the opportunity, through a Skills4Life programme, for moral and spiritual reflection in order to promote confidence, positive emotional and mental health.
- develop the confidence of our students so that they are able to live safe, healthy and fulfilling lives;

### Supporting Personal Best

- develop successful students who give their personal best and achieve;
- enable students to become responsible citizens who make positive contributions to college life;
- equip students with the 21st century knowledge and skills needed beyond Shelley College;
- encourage students to develop the knowledge and skills needed for employment or training;

## Implementation & Principles

Our day consists of 5 periods of 60 minutes every day. We operate a two-week timetable consisting of a ‘Yellow’ and a ‘Blue’ week making a 50 period fortnight. Students attend a 30-minute form period at the beginning of each day and a Cornerstones, Momentum/RS lesson every Monday morning (for 40 minutes). The teaching of this is by Personal Development Mentors, with students learning about key values and skills required to become a good citizen. All students attend at least one assembly each week that complement our Cornerstones, Momentum curriculum and support the delivery of social, moral, spiritual and cultural aspects of learning, including the promotion of British values & Religious Studies.

## The Curriculum model

	Ma	En	Sc	MFL	Pe	Cs	Ar	Te	Mu	Rs	Gg	Hi	Dr	Su	TOTAL
Year 9	7	7	7	6	4	2	2	3	2	2	3	3	2	0	50
Year 9 Support Pathway	7	7	7	0	4	2	2	3	2	2	3	3	2	6	50

	Ma	Eng	Sci	Core PE	Option 1	Option 2	Option 3	Option 4	Total
Year 10	9	9	9	3	5	5	5	5	50
Year 11	9	10	9	2	5	5	5	5	50

	Option 1	Option 2	Option 3	Option 4	GCSE re-sit Eng or Ma	Enrichment	Personal Study	Total
Year 12 & 13 (3 options)	9	9	9	0	0	4	19	50
Year 12 & 13 (4 options)	9	9	9	9	0	4	10	50
Year 12 & 13 (GCSE re-sit)	9	9	9	0	5	4	14	50

### Key Stage 3: Year 9

In Year 9 students are taught in 4 bands of similar ability across all subjects. Within each band students are taught in sets in Mathematics and Science, Modern Foreign Languages (French, Spanish or dual linguists), Humanities and Drama. Other subjects including English, Music, PE, Technology and Art are taught in mixed ability.

Subjects follow the **National Curriculum** building knowledge and skills and help students prepare for Key Stage 4. We liaise closely with our feeder middle schools to ensure there is a seamless transition into Year 9 and that our programmes of study follow logically from years 7 and 8. There is **no narrowing** of the curriculum. The programmes of study are organised and sequenced to give students both breadth and depth in their curriculum helping them make informed choices during the options process in Year 9.

### Key Stage 4: Year 10 and 11

All students follow one of the following GCSE pathways for two years:

**Pathway 1 Triple Science** is a traditional GCSE route and consists of Triple Science and three options which must include a language (French or Spanish) and either History or Geography (both can be taken).

**Pathway 2 Ebacc** is a traditional GCSE route and consists of four options which must include a language (French or Spanish) and either History or Geography (both can be taken). The remaining two options consist of subjects experienced in Year 9 and new subjects including Business Studies and Dance.

**Pathway 3 Open** allows students to take four subjects from a range of GCSE options including some vocational courses. Individual programmes of study are offered to a small number of students in pathway 3. These may include time in the Student Support Centre &/or The Bridge, work experience & college placements.

### Option blocks for KS4 2023

<b><i>Option A: Triple Science</i></b>	<b><i>Option B: MFL</i></b>	<b><i>Option C: Humanities</i></b>	<b><i>Option D: Open choice</i></b>
Triple Science Dance Music Creative Media Design Tech Business Studies PE Drama Food & Nutrition Design Technology (Textiles, Graphics, Materials, Engineering) Computer Science	French Spanish Photography Food & Nutrition Vocational Business	Geography History Sports CNat Art BTEC IT	Religious Studies Art Drama PE Music Business Studies Dance Design Technology (Text, Graphics, Materials) Food & Nutrition Computer Science History Engineering Creative Media

### Key Stage 5: Year 12 & 13

A combination of academic excellence, strong community and provision of enriching activities makes our Sixth Form an outstanding place to work and learn. We are committed to supporting the success of every student whether they join us from Shelley College or from another school.

The sixth form curriculum is wide and offers a large range of subjects with progression pathways for students.

The vast majority of students choose three A Level /Level 3 Vocational courses, however a small number choose to study 4 subjects. Students who do not achieve a grade 4 or above in GCSE English &/or Mathematics resit these subjects with timetabled lessons allocated. All students complete work experience and have the opportunity to access a range of enrichment activities and courses.

Leaders promote fundamental British values through our Momentum curriculum. There is reinforcement of these through assemblies and form time activities. Students have a good understanding of the skills, knowledge and attitudes they need to succeed in and contribute to modern Britain.

## A level option blocks for 2023

<u>Band A</u>	<u>Band B</u>	<u>Band C</u>	<u>Band D</u>	<u>Band E</u>
Business Studies	Maths	OCR Sport (1)	Food	OCR Sport (2)
Psychology	Music	Theatre Studies	Business Studies	Psychology
Biology	Applied Science	Art	Maths	Physics
English Language	History	Geography	English Literature	MPE
Product Design	Computing	Maths	Media	History
French	Textiles		Biology	Economics
Sociology	French		Chemistry	

## Personal Development

### Careers Education and Guidance

We offer a programme that meets the government's statutory guidance on careers advice and education, which can be found here:

[https://assets.publishing.service.gov.uk/government/uploads/system/uploads/attachment\\_data/file/748474/181008\\_schools\\_statutory\\_guidance\\_final.pdf](https://assets.publishing.service.gov.uk/government/uploads/system/uploads/attachment_data/file/748474/181008_schools_statutory_guidance_final.pdf)

We expect to have achieved the Gatsby Benchmarks by September 2020:

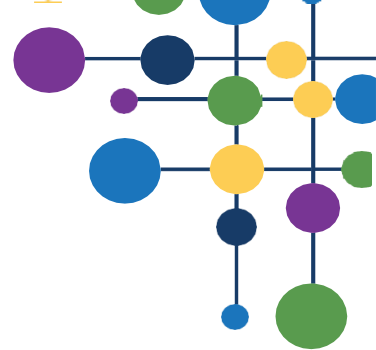
<https://www.gatsby.org.uk/uploads/education/good-career-guidance-handbook-digital.pdf>

At Shelley College we offer a structured programme from Year 9 onwards and will:

- provide an effective careers programme, offering pupils unbiased careers advice, experience of work, and contact with employers to encourage them to aspire, make good choices and understand what they need to do to succeed;
- supports readiness for the next phase of education, training or employment so that pupils are equipped to make a successful transition.

Sixth Form students will follow the full curriculum entitlement to careers education, advice and guidance, as described in the national guidance for programmes of study:

<https://www.gov.uk/government/publications/16-to-19-study-programmes-guide-for-providers/16-to-19->



The programmes include an offer of meaningful work experience and support to secure places on higher education courses or employment.

## Impact

### KS4

Outcomes for all students are positive, with all four components of Progress 8 achieving a positive score. All students regardless of gender or prior attainment achieve a positive Progress 8 score.

#### 2022 Key Stage 4 results

School Progress 8 score = +0.59 unvalidated

Progress 8 English = +0.55

Progress 8 Maths = +0.78

Progress 8 'Open' element = +0.34

Our key priority is to improve the progress made by disadvantaged students, in all subjects. Improvements have been secured in the curriculum offer available to low prior attaining pupils. The progress of students currently on roll provides evidence that recent changes made to our curriculum, including greater access to vocational options should result in improved outcomes for students, particularly in the 'open' bucket. We continue to review and improve our curriculum offer and keep up to date with curriculum developments nationally.

In recent years the percentage of students classed as NEET when leaving Shelley College is very low, most years this figure is 0%.

Our current class sizes are on average 26 students in KS3 & 4.

### KS5

Outcomes overall are positive, with all students regardless of gender or prior attainment achieving a positive L3VA score. The progress made by our bursary students was higher than that of 'other' students.

For Year 13 leavers this summer the **L3VA score is -0.08 for A-Level & 0.12 for Applied subjects unvalidated.**

For students staying in education, training or employment the most recent validated figure is 97% but this was for 2020 leavers as the figure is judged after two terms from leaving.

Our current class sizes are 15 for Year 12 and 13 for Year 13.

Students who join our Sixth Form benefit from a range of opportunities that come from being part of a large and successful college. There are many additional opportunities to develop leadership, to do charity work, to volunteer and to enhance your employability within one of the highest performing colleges in the local area.

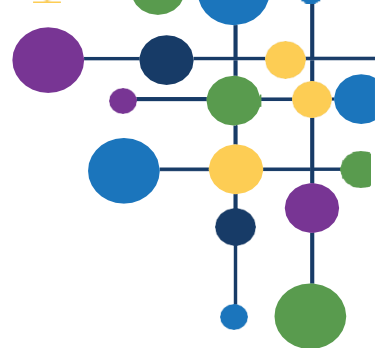
### Cornerstones, Momentum & Sex and Relationship Education (SRE)

The aim of our Cornerstones, Momentum curriculum is to develop the knowledge and skills in young people that allow them to go on to be happy and successful individuals who make a positive contribution to society. We believe that a positive contribution is developed through students whose moral approach is underpinned by respect and valuing the diverse beliefs and views of the population that comprise 21st century Britain.

The Cornerstones, Momentum curriculum will cover a wide variety of SMSC themes and equip Shelley College students with the knowledge required in the following areas:

- Fundamental British Values – understanding what the British Values are and their importance in society.





- Relationships and Sex Education – understand what healthy and safe relationships look like in modern Britain and how young people can develop the resilience to foster these relationships in all walks of life.
- Safeguarding – understanding how we protect ourselves and others from risks we face in modern Britain and developing the strength of character to say ‘no’.

Cornerstones, Momentum is delivered to all students in way that ensures individuals from all backgrounds and levels of ability can access the content and implement that knowledge to allow them to become positive global citizens. The [Programme of Study](#) will give all students the opportunity to discuss and engage in difficult topics and material in an age appropriate and sensitive manner whilst ensuring that when students leave Shelley College they have the confidence to make appropriate decisions and choices.

In the Sixth Form we organise non-academic educational opportunities through our ‘Shelley Momentum’ programme.

## Shelley Momentum

Momentum is our new way of organising your 6<sup>th</sup> form non-academic education opportunities.

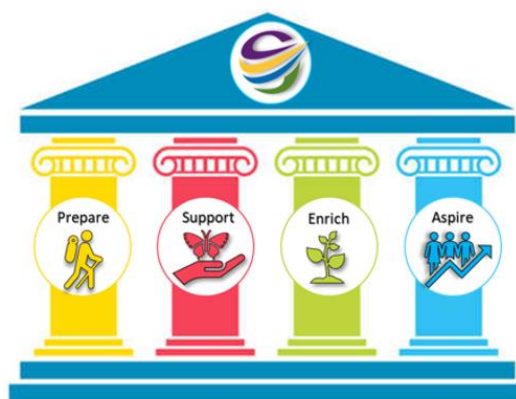
It is founded upon 4 pillars:

**Prepare:** Preparing you for the challenges of adulthood, including health and wellbeing, RSE, managing risk, and skills for life, to prepare you for the next 5-7 years ahead.

**Support:** Ensuring you are supported in your study skills throughout your time at Shelley College.

**Enrich:** Creating opportunities for you to enrich your learning, through enrichment courses, volunteering opportunities, and opportunities to be part of the school community.

**Aspire:** Crafting your future aspirations through opportunities to meet and visit post-18 providers, while supporting your applications and personal journey to post-18 careers.



### Extra-Curricular Activities

We offer a rich programme of extra-curricular opportunities (e.g., Students leadership, mentoring, theatre trips, Duke of Edinburgh, Berlin Trip, Ecuador trip, field trips, sports teams and sporting experiences) to broaden students' experiences and understanding of other cultures. Clubs and workshops operate both in school time and after school with many taking place on a lunchtime for students to engage in e.g., the use of our MUGA facility for sports groups. In the Principal's newsletter we regularly celebrate the positive 'cultural capital' we are building at Shelley College. The sixth form students make a significant contribution to the success of the school by taking on positions of responsibility such as lunchtime supervisors, offering extra support for lower school students with reading and helping out in the classroom. They also volunteer in the community and lead a number of fund-raising events for local charities. There is broad and highly valuable enrichment programme covering everything from sign language and first aid courses to traditional sports.

