



The SHC Scholars Club

Valuing People and Supporting Personal Best

A Personal Development Package for all students.

Enjoying, achieving, succeeding together.

Look inside to find out more!



At Shelley College (SHC), we aim to provide a wealth of opportunities for all students outside the classroom and beyond the curriculum. Our ambitious curriculum extends beyond the academic by providing students with a broader development, enabling them to develop and discover their interests and talents.

Our wider work with students, develops their character – including their resilience, confidence and independence – and help them know how to keep physically and mentally healthy. We also aim to encourage further education through programmes such as the ‘Brilliant Club’ and subject specific university visits in order to prepare students for future success in their next steps.

At Shelley College, we recognise that all staff are crucial in preparing students for their adult lives, teaching them to understand how to engage with society and providing them with plentiful opportunities to do so. For example, we promote the Duke of Edinburgh’s Award scheme from Year 9 and offer an array of trips and visits to places in the UK and abroad. In line with our school motto ‘Valuing People and Supporting Personal Best’, we go beyond the expected, so that students have access to a wide, rich set of experiences. Opportunities for students to develop their talents and interests are of exceptional quality, not to mention, vast. We have a large proportion of students getting involved with these extracurricular opportunities so look inside to see what we offer from Year 9 right through into our Sixth Form (see the enrichment section of our website for Post 16 opportunities).

Our Personal Development package has been planned to provide a wide range of rich experiences throughout students’ time at Shelley College. Please contact school if you have any further questions about any of the extracurricular opportunities that we offer. These will be updated every year!

Mrs Joanna Richards

SHC School Improvement Leader – Personal Development

Joanna.richards@sharemat.co.uk



Our Personal Development Package

'The SHC Scholars Club'

One of the most important aspects of education is the opportunity to experience things outside the classroom which will help to develop students personally as well as academically. Our school has a rich tradition of providing students with experiences and enrichment activities and these are outlined in this personal development brochure and form the basis of 'The SHC Scholars Club'.

Whilst we all appreciate that achieving academically is important, it is equally important, that students grow up to become well-rounded individuals who have a wide variety of experiences to draw upon which will help them make important decisions in their lives.

As a result of this, we have introduced our students to 'The SHC Scholars Club'. This is a set of 7 standards that students will work towards in order to develop themselves personally throughout their school career with us. These standards cover important aspects of personal development that will help students become confident, happy, resilient young adults. To fulfil the seven standards during the time students are with us, all students will be encouraged by all staff to get involved in some of the clubs, trips, visits, school productions and many other things that go on at Shelley College. Most of these things are free to our students and can have a huge impact on happiness, confidence and overall well-being.

Attendance to before, during and after school clubs, trips, visits, enrichment activities, participation in school productions, school councils, fundraising activities and any other extra-curricular initiatives that students take part in will be recorded and shared with students, staff and parents.

The activities that students take part in will naturally fulfil many of the seven standards but where there are gaps in students' experience of a particular standard, we will provide opportunities for these standards to be achieved. All students are expected to embark on our personal development pathway; 'The SHC Scholars Club' and all students will graduate at the end of Year 9, 10 and 11 as a 'SHC Scholar' at either a bronze, silver, gold or platinum level. The student standards (SCHOLAR) can be found below:

Service

Charity and Community

Health and Wellbeing

Oppportunity

Leadership

Awards and Excellence

Regular attendance at an after-school activity



'The SHC Scholars Club'

Valuing People and Supporting Personal Best

What opportunities beyond the classroom do we offer at Shelley College?.....	Page 2
What is the 'SHC Scholars Club'?.....	Page 3
Taking Learning Beyond the Classroom	
The Scholars Programme run by The Brilliant Club.....	Page 5 – 6
The Duke of Edinburgh Award.....	Page 7
The Science Trips.....	Page 8 – 9
The Shelley College Sports Tour.....	Page 10
The Geography Trips.....	Page 11
The PE Go Ape! Trip.....	Page 12
The PE Wimbledon Trip.....	Page 13 - 14
The History Trips.....	Page 15
The Modern Foreign Languages Trips.....	Page 16-17
The English Trips.....	Page 18
The Eco School Trips.....	Page 19
The Dance and Music Trips.....	Page 20 - 22
The Art Trips.....	Page 23 – 24
The Drama Trips.....	Page 25
Eco School	Page 26
Sports Clubs and Activities.....	Page 27-30
Music Clubs.....	Page 31
Boxing Club.....	Page 32
The Maths Challenge.....	Page 32
SHC British Science Week.....	Page 33
Art Clubs.....	Page 34
The Rotary Technology Tournament.....	Page 34
The Annual Christmas Showcase.....	Page 35
Overview of The SHC Scholars club graduation criteria.....	Page 36

The Brilliant Club



A small group of Year 10 students will be selected to take part in The Brilliant Club. It is a fantastic opportunity for students to get exposure to University and further education.

We train our PhD tutors to deliver The Brilliant Club in our partner schools across the UK. They share their subject knowledge and passion for learning with small groups of students aged 8-18. It helps them to develop the knowledge, skills and confidence to secure a place at a competitive university.

The programme is available to state schools across England, Wales, Scotland and Northern Ireland. It is structured around seven tutorials, and students also attend two events at our partner universities to speak with current undergraduates and learn about university life. Fourteen students are in one placement, taught in two smaller groups of seven. They work towards completing a challenging final assignment which is marked and moderated using university grades.

On the programme, students work with a university researcher to give them an experience of what it's like to study at university. We call the researcher the students' PhD Tutor. The PhD tutors share their subject knowledge and passion for learning with small groups of students. This will stretch and challenge students as they develop their academic skills. Students also learn about life as a university student at Launch and Graduation Events and can ask questions of current university students. At the end of the programme students complete a final assignment of 2000 words. This is marked using the university grading system and allows students to show the progress they've made on the programme.

Although university may not be for everyone, The Brilliant Club aims to give children an experience of university learning to help them make an informed decision. The Brilliant Club will begin with a Launch Event in partnership with a competitive university. This an exciting opportunity that will introduce students to The Scholars Programme and give them a taster of student life at university.



The Brilliant Club's Scholars Programme gives pupils from non-selective state schools the opportunity to work with a PhD researcher to experience university-style learning. It helps pupils to develop the skills, knowledge and confidence to secure a place at a competitive university and succeed when they get there. We work with pupils from aged 8 to 18, supporting pupils to make an informed choice about their future.

The Scholars Programme offers:

- Challenging courses taught by a world-class PhD researcher
- Experience of university-style learning in a small group
- Launch and graduation events with competitive universities

Our partner schools



Why get involved?

- Students develop key university readiness skills, including critical thinking and metacognition
- Scholars Programme graduates are almost twice as likely to progress to competitive universities (UCAS evaluation, 2020)
- Schools receive robust impact reports showcasing progress towards Gatsby Benchmarks 3 and 7
- The programme is cited as an effective use of Pupil Premium by Ofsted



We are a national charity



We are supported by 40+ partner universities



Over the next five years, we are aiming to support 100,000 students across the UK

An example of our courses

Did modern music predict the First World War?

Bacteria superheroes: can they help us save our environment?

Gone with the waves: climate change and human migration

Through the looking glass: an introduction to literary theory

Riot, rebellion and the racialisation of disorder

Join the Club

England



After never really talking about universities, my son came back from his trip to Cambridge truly inspired and announced that he would like to go there. He is now studying for his A-levels, and learning how to apply for Cambridge. I really feel that the programme made him believe it all possible.

Secondary school parent,
Buckinghamshire

Programme Impact

For the fifth consecutive year, an evaluation by UCAS has shown that Scholars Programme graduates are more likely to **apply to, receive an offer from and progress to** a highly-selective university.

The data shows a correlation between **success on the programme and university destinations**: pupils on The Scholars Programme who submitted their final assignment and graduated from the programme were more likely to enrol at a highly-selective university (**48%**) than their peers who did not complete the programme (**28%**).

48%

28%

The Duke of Edinburgh's Award

DofE is a real adventure from beginning to end. It doesn't matter who you are or where you're from. At Shelley College, we offer the DofE at three levels, Bronze, Silver or Gold and this is supported by Kirklees DofE trained staff. Students achieve an Award by completing a personal programme of activities in four sections (five if you're going for Gold). Students find themselves helping people or the community, getting fitter, developing skills, going on an expedition and taking part in a residential activity (Gold only). But here's the best bit – students choose what they do! In 2021-22 Academic Year, 104 students took part in Bronze DofE with 7 taking part in the Silver award. In 2022-23 Academic Year, 83 students are taking part in Bronze DofE award.

The bronze award consists of 5 sections - physical, volunteering and skill section, training section and expedition section. The students choose two of the physical, skill and volunteering sections to complete for 3 months and then the remaining physical, skill or volunteering section to complete for 6 months. The aim from those three sections is that students set themselves goals to improve their physical health, learn a new skill and give back to others/the community.

Kirklees DofE run the training and expedition sections, where they do 3 days of training learning campcraft, health and safety, first aid, camping cooking, putting up tents, back pack packing etc. through the training days along with a practice expedition/day walk.

And then through the actual expedition they go and complete a 2 day walk where they carry all their own equipment and food overnight and plan and navigate a route to follow. They get assessed for this by Kirklees DofE staff.



For national resources, contacts and guidance on all aspects of DofE programmes, visit www.DofE.org



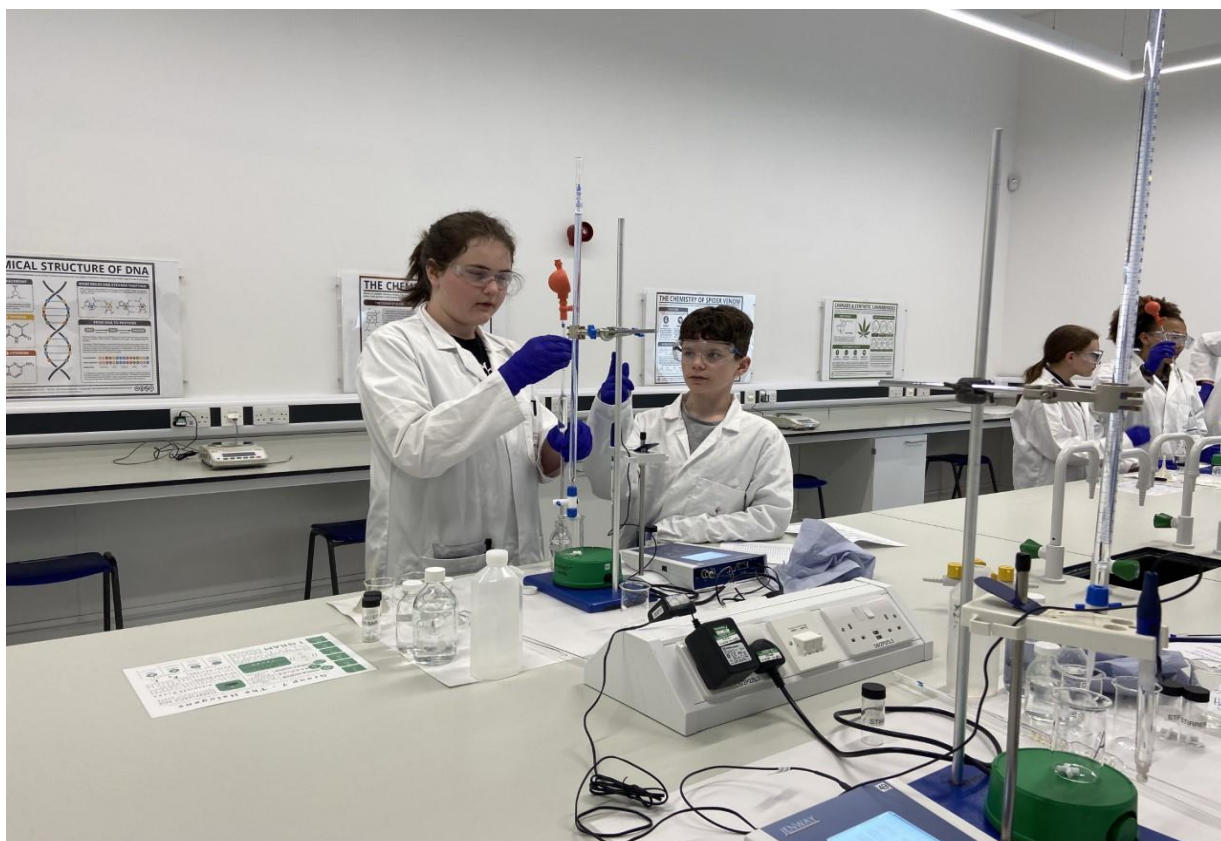
Trips and Visits

We offer a wide range of trips and visits at Shelley College. Although it has been difficult following Covid, we are now back up and running with our Personal Development Package and here are details of the trips we are running this academic year! There are so many to choose from!

The Science Huddersfield University Trip

Mrs Martin took 14 wonderful years 9 and 10 students to Huddersfield university to take part in 2 practicals in their amazing science labs. We also had a tour which took in the fantastic new Hepworth Building. A brilliant day to raise aspirations in science and something we will do again later in the year :)





Jodrell Bank visit

Our Science department is arranging a visit for Year 9 and 10 to Jodrell Bank to learn about the universe and more! Jodrell Bank is an inspirational place full of mind-blowing stories of pioneering heritage and cutting-edge science. Part of The University of Manchester, it is, uniquely, both a World Heritage Site and a live scientific research facility.



The Shelley College Sports Tour

This is an optional but extremely exciting trip to Barcelona for year 9 and 10 boys and girls who have shown a commitment to school sport. It runs for 4 nights in the Spring term.

The trip involves the students playing football matches against local teams, a trip to the Nou Camp and a water Park! Such a fantastic opportunity!



Sports Arrangements



- 2 x friendly matches per squad against local opposition
- 1 x 2-hour pitch time for our own football training
- 2 under 14's boys teams
- 2 under 15's boys teams
- 1 under 15's girls team

absolute
sports travel

The Geography Salford Quays Trip

The Geography department take students on a field trip which forms the basis of the human geography fieldwork where students will investigate the effects of urban regeneration on the former Salford Quays dockland. It is a fantastic opportunity to visualise the urban processes that students learn about in geography and to see first-hand how a run-down environment can become an exciting hub for TV, music, film and theatre.



The Geography Hornsea Trip

In addition to Salford Quays, the Geography department also take students to Hornsea. This field trip forms the basis of students' physical geography fieldwork where students will investigate the effects of longshore drift on beach sediment. It is a fantastic opportunity to visualise the coastal landforms and processes that students learn about in Geography and the sea air is a lovely change from the country air we are used to!



The PE Go Ape trip

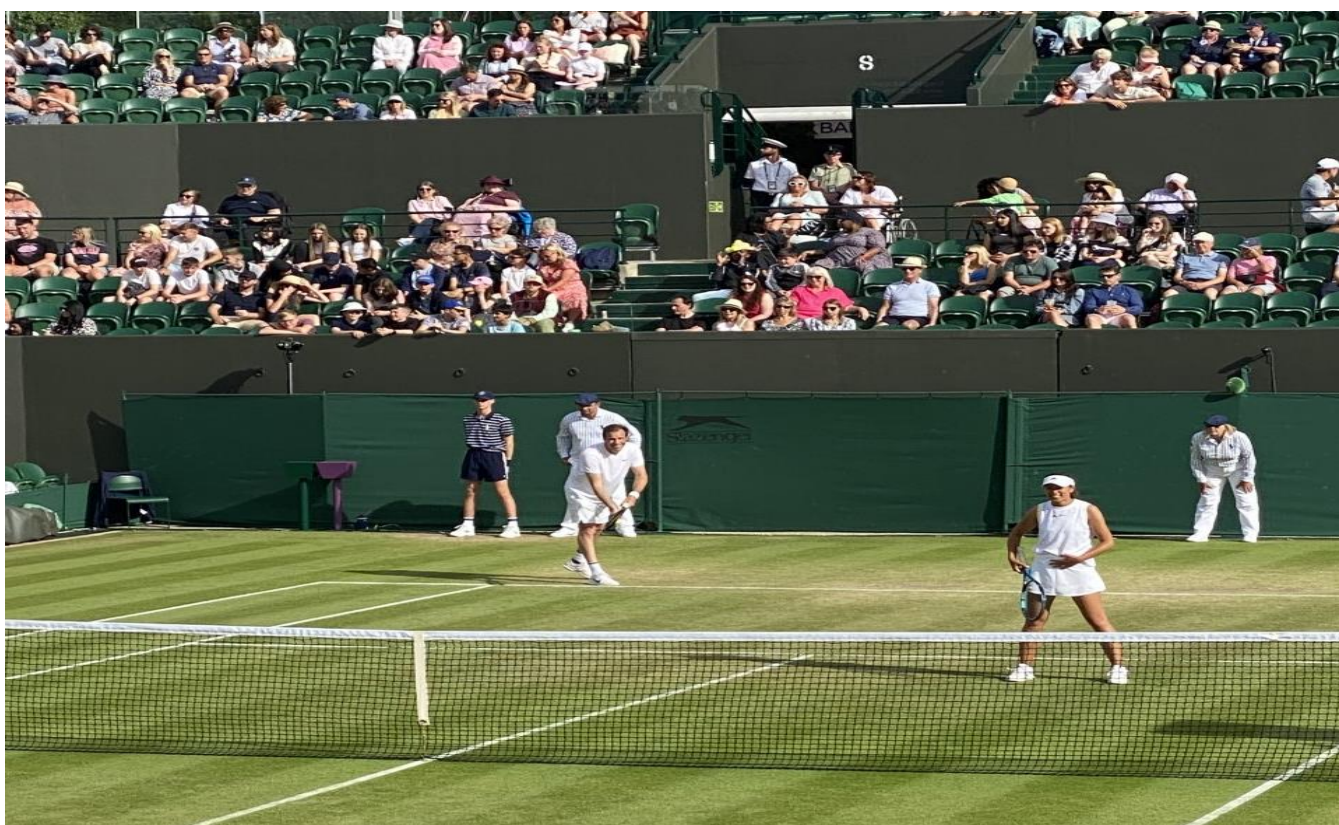
Our PE department takes groups of students studying Sports Leadership to Go Ape to practice their team building skills and resilience. At Go Ape students take part in a range of high ropes course and tree top adventures. The trip develops students' skills, knowledge and confidence in outdoor activities. The trip supports students on the Cambridge Nationals' course with their coursework completion and practical performance for the R056 unit.



The PE Wimbledon and London Eye trip

Our PE department also takes a group of students who have demonstrated good behaviour and commitment to Physical Education to experience an international sporting event. A fantastic opportunity and a once in a life time event! Students also spend a day seeing famous attractions in London such as The London Eye.



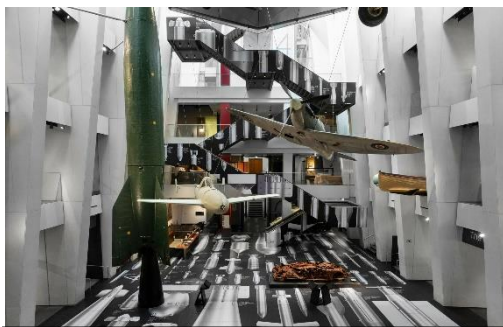


The GCSE History trip to London

The History GCSE seeks to excite and challenge students by taking them on a journey through our past. With its rich and lengthy curriculum our GCSE history trip to London aims to accomplish this! Our new 2023 trip to London will expertly cover a range of study themes, such as: Britain in WWI and WWII; The Holocaust; Crime and Punishment; and Elizabethan England. The trip will specifically link to the GCSE History units Whitechapel, c1870-c1900: crime, policing and the inner city and Early Elizabethan England, 1558-88.

Our history trip to London features a whole range of activities, including visits to;

- The Tower of London
- Hampton Court Palace
- The Imperial War Museum
- Whitechapel Crime, Policing and the Inner-City walking tour
- City of London Police Museum
- Jack the Ripper Tour
- West End Show



THE IMPERIAL WAR



THE TOWER OF LONDON



JACK THE RIPPER TOUR



WEST END SHOW

The GCSE French trips to Paris

The Modern Foreign Languages department are delighted to offer an exciting opportunity for Year 10 and 11 students studying GCSE French at Shelley College. To support students in the GCSE French course they are undertaking, students are invited on a three-night residential trip to Paris.

The trip will involve three days and three nights in the French capital city. This will give students an excellent opportunity to practice their French speaking skills in real-life situations, as well as benefiting from an authentic cultural experience in France. Over the course of the trip, students will have the opportunity to apply their knowledge to everyday interactions such as making purchases, asking for information etc, developing their confidence in speaking and listening.



The GCSE Spanish trips to Barcelona

The Modern Foreign Languages department are delighted to offer an exciting opportunity for Year 11 students studying GCSE Spanish at Shelley College. To support your child in the GCSE Spanish course they are undertaking, we are planning a three-night residential trip to Barcelona in March 2023.

The trip will involve three days and three nights in Barcelona. This will give students an excellent opportunity to practice their Spanish speaking skills in real-life situations, as well as benefiting from an authentic cultural experience in Spain. Over the course of the trip, students will have the opportunity to apply their knowledge to everyday interactions such as making purchases, asking for information etc., developing their confidence in speaking and listening.



The English 'An Inspector Calls' theatre trip

The English department are taking a group of students to the theatre as part of their GCSE play they are studying 'An Inspector calls'.

65 students in Year 10 and 11 were invited to see Stephen Daldry's production of J.B.Priestley's 'An Inspector Calls' live at the York Opera House. In offering a curriculum-linked trip to a theatre production, our aim is to broaden the experiences of students within and outside of the curriculum. The theatre trip supports learning in the English Literature curriculum by consolidating the knowledge of our GCSE students who must understand the play for the Modern Texts element of the GCSE exam. Seeing a production in theatre also develops our students' cultural capital, giving them access to experiences which they may not otherwise have by exposing them to the thrilling atmosphere of live performance.

Written at the end of the Second World War and set before the First, An Inspector Calls is a compelling and haunting thriller. The story begins when Inspector Goole arrives unexpectedly at the prosperous Birling family home. Their peaceful dinner party is shattered by his investigations into the death of a young woman. His startling revelations shake the very foundations of their lives and challenge us all to examine our consciences. More relevant now than ever, this is a must-see for a whole new generation – we can't wait to hear all about it!



The Eco School Trips to our local garden centre

Our SHC Eco Club visit St Aidan's First School to meet Eco Clubs from other schools! This year we represented Shelley College impeccably and brought back lots of ideas. Students also joined the Kirklees Youth Panel for Climate and attend virtual meetings to discuss ideas. SHC Eco Club also go on visits such as a quick hour at Dobbie's Garden Centre to buy plants for our SHC garden! We focused on butterfly and bee friendly plants, but also on ones that were on offer and not in top condition, so they were unlikely to be bought by other people. We don't want any plant to go to waste!



The Charlie and The Chocolate Factory Music Trip to Leeds Playhouse

Our Music department are taking a group of Year 9 students to Leeds Playhouse to watch Charlie and The Chocolate Factory to see an array of fantastic compositions played by talented musicians!



The Halle Orchestra Music Trip to Bridgewater Hall

Our Music department are also taking a group of GCSE musicians to The Bridgewater Hall to watch the Halle Orchestra; *THE ORCHESTRA THROUGH THE AGES*. Featuring set works for GCSE and A-level Music!



The Dance Trips and activities

Here at Shelley College, we have some superb dancers! There are a lot of trips and activities planned for dance students this year including;

- Shelley Y9 Dance company - Monday - 3-4pm (open to all)
- Shelley College's Ballet Dance Company - Thursday 3-4pm (For higher ability level).
- Trip - Rambert - Peaky Blinders - Bradford Alhambra - Jan 2023
- Trip - Move It Dance Conference - London - March 2023
- Industry Expert workshop - July 2023
- Northern School of Contemporary Dance workshop - Spring 2023
- Trip - Alton Towers Performance - June 2023
- Pyramid Dance Festival Performance - At Shelley - Dec 2022
- Strictly Pennine Dance Festival Performance - Lawrence Batley Theatre - Feb 2023
- Christmas Showcase Performance - Dec 2022
- Evening of Music and Dance Performance - At Shelley - May/June 2023



The Art Trip to London

The Art department are taking a group of Year 10 (and 12) students to London to see the famous artist sights including;

The National Gallery, The National History Museum, Earls Court, Hard Rock Café, The Tate Modern, Covent Garden and The London Eye!

Students will take their sketch books to capture some of the incredible art work London has to offer. A truly inspirational experience for our Art students!



The Art department have many more trips planned this year too including...

- Year 10/11 - 1 day trip to Manchester Nov 2022 - GCSE Photography and Art.
- Year 11 - 2 day Art trip to London Oct 2022.
- Year 11 - 3 day trip to Amsterdam Feb 2023.
- Year 11 - 2 day trip to London July 2023.



Drama and Theatre Studies trips

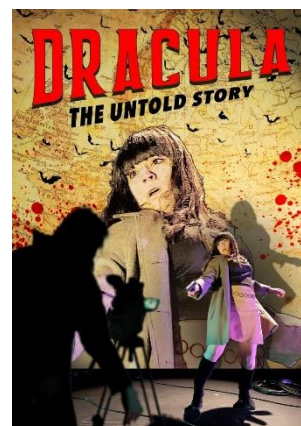
The Drama Trips

At GCSE, students will observe a performance of live theatre as part of their examination. Students will travel to watch a theatre production and will complete Theatre Review as part of their written exam.

These performances may take place at Shakespeare's Globe Theatre, The Lowry, National Theatre, Alhambra Theatre, Lawrence Batley, Royal Exchange, York Theatre Royal and many more.

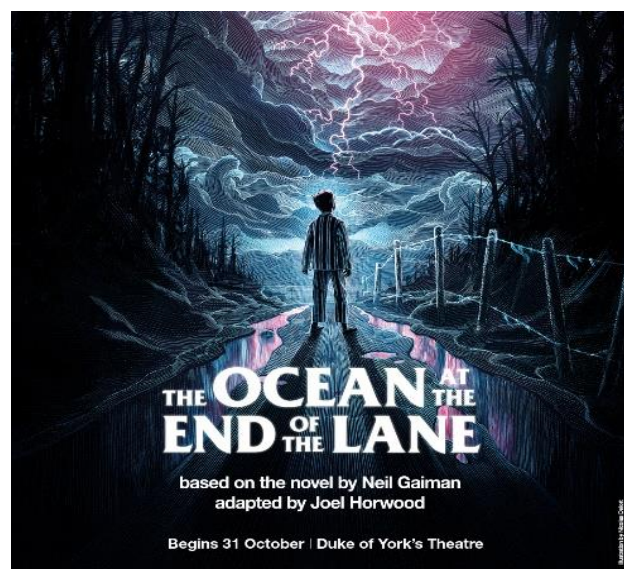
Previous productions have included Dracula: The Untold Story, by Imitating the Dog at The Lowry; Frantic Assembly's Othello at York Theatre Royal and the upcoming The Ocean at the end of the lane; The acclaimed National Theatre production from the imagination of Neil Gaiman, in February 2023.

A Level students will further broaden their knowledge of theatre, delving into practitioners of the theatre arts, exploring directing, set, costume and lighting design alongside performance skills. Students will be given the



a Live

Dog



opportunity to witness a live theatre performance in the style of their chosen practitioner.

Drama and Theatre students are also encouraged to audition for the Christmas Showcase, hosted on the last day of term before December.



Other Extracurricular Activities to take learning beyond the classroom!

Eco School

The Science department are offering a wide range of opportunities beyond the classroom to raise aspiration and future career goals!

Eco School – we need you!



Whilst working through the Eco-Schools Seven Steps to gain our GREEN FLAG award we will be focusing on the following:



Biodiversity

Maintaining a high level of plant and animal life locally and globally.



School Grounds

Improving your school for students, staff, plants and wildlife.



Waste

Refusing, reducing, reusing, repairing and recycling.

www.eco-schools.org.uk

What's Next?

The Project

So far we have improved the courtyard near maths to improve our School Grounds and encourage some Biodiversity. But there is so much more we want to do and we need your ideas!

We need students in Year 9, 10 and 12 to put themselves forward for this to work with Mrs Martin in Science.

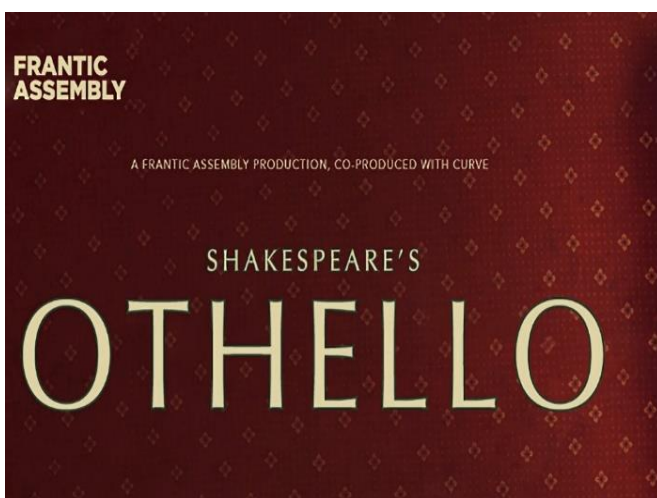
Please meet on Wednesday 21st September at lunchtime in A6.

You can bring lunch down and eat it here.

THANK YOU!

The project has been a huge success so far – we have even made a giant plastic turtle! Come and see for yourself!

Sports Extra Curricular Activities and Clubs...there are so many to choose from!



- Y9, Y10, Y11 Netball
- Y9, Y10, Y11 Boys Football
- Y9, Y10, Y11 Girls Football
- Y9, Y10, Y11 Boys Rugby
- Y9, Y10, Y11 Cricket
- Y9, Y10, Y11 Girls rugby with professional coaches from Huddersfield Giants
- Y9, Y10, Y11 Badminton
- Y9, Y10, Y11 Boys Basketball
- Y9, Y10, Y11 Girls Basketball
- Y9, Y10, Y11 Table Tennis
- Y9, Y10, Y11 Trampolining
- Y9, Y10, Y11 Climbing
- Y9, Y10 Y11 Rounders
- Y9, Y10, Y11 Athletics

An example of a Sports Extra-Curricular Timetable

BREAKFAST AN BREAK CLUB 8-8.30 am 11-11.20am		AFTER SCHOOL CLUBS 3 – 4 PM	
DAY	BALCONY	SPORTS HALL	OTHER
MON	<i>Table Tennis all years</i>	<i>Basketball all years</i>	<i>Year 9 Football</i>
TUES	<i>Table Tennis all years</i>	<i>Boys' badminton all years</i> <i>Girls football all years</i>	<i>First school events</i>
WED	<i>Table Tennis all years</i>	<i>Girls' netball all years</i>	
THURS	<i>Table Tennis all years</i>	<i>Girls' badminton all years</i>	<i>Girls' basketball all years</i> <i>Girls Rugby all years</i>
FRI	<i>Table Tennis all years</i>		



GIRLS NETBALL



GIRLS RUGBY



There are so many sporting opportunities at Shelley College!

Here are a few of the competitions we enter every year. Ask your PE teachers for more details!...







- Y9, 10 and Y11 Netball Kirklees league and tournament
- Y9, Y10, Y11 Football Huddersfield Schools league
- Y9, Y10, Y11 Football English Schools cup
- Y9, Y10, Y11 Football Huddersfield Cup
- Y9, Y10, Y11 Football West Yorkshire Cup
- Y9, Y10, Y11 Basketball Huddersfield League
- Y9, 10, Y11 Basketball Huddersfield Cup
- U14 and U16 Kirklees Athletics
- U14 and U16 English Schools Athletics
- Y9 and Y10 Kirklees Cross country cup
- Y9, Y10, Y11 English school swimming
- Y9 and Y10 Girls Football West Yorkshire cup
- KS3 and KS4 British open schools squash competition
- Cricket U14 and KU16 Yorkshire Cup
- Cricket U14 and U16 Kirklees league and tournament

Sports Leaders Events this year – students are helping out with our Pyramid Sporting Events throughout the year! Check the dates :)

DAY	DATE	TIME	AGE	EVENT	VENUE
Tues	13/9/22	4-5pm	Staff	CLUSTER MEETING	Shelley College
Tues	20/9/22	4-5pm	Years 3/4/5	CROSS-COUNTRY	Shelley College
Tues	27/9/22	4-5pm	Reception/ Years 1/2	CROSS-COUNTRY	Shelley College
Tues	11/10/22	4-5.15pm	Years 2/3	GIRLS FOOTBALL	Kirkburton and Scissett Middle astro
Tues	18/10/22	KMS (9.30-12pm) SMS (1-3.15pm)	YR 2	MULTI SKILLS	Shelley College indoor
Tues	8/11/22	SMS (1-3pm) KMS (4-5.30pm)	KS2	SPORTS HALL ATHLETICS	Shelley College indoor
Tues	15/11/22	4-5.15pm	KS2	SPORTS HALL ATHLETICS FINALS	Shelley College indoor
Tues	6/12/22	4-5.15pm	KS1 - 5	DANCE FESTIVAL	Shelley College hall
Tues	10/1/23	4-5pm	Staff	CLUSTER MEETING	Shelley College
Tues	17/1/23	KMS (9.30-12pm) SMS (1-3.15pm)	YR 1	MULTI SKILLS	Shelley College indoor
Tues	21/2/23	4-5.15pm	KS2	FOOTBALL TOURNAMENT	SCORE
Tues	28/2/23	4-5.15pm	YEAR 6	MIDDLE SCHOOLS FOOTBALL TOURNAMENT	SCORE
Tues	7/3/23	4-5pm	KS2	GIRLS FOOTBALL TOURNAMENT	SCORE
Tues	21/3/23	4-5.15pm	YEAR 2/3	FOOTBALL TOURNAMENT	SCORE
Tues	28/3/23	4-5.15pm	KS2	HOCKEY FESTIVAL	Kirkburton Middle astro
Tues	25/4/23	4-5.15pm	KS2	HI 5 NETBALL FESTIVAL	Shelley College MUGA and indoor
Tues	9/5/23	4-5pm	Reception/ Yr 1 & 2	CROSS COUNTRY	Shelley College
Tues	16/5/23	4-5pm	Years 2,3,4,5	CYCLING EVENT	Scissett Middle
Tues	23/5/23	4-5.15pm	KS2	TAG RUGBY	Scissett Middle
Tues	6/6/23	4-5pm	STAFF	CLUSTER MEETING	Shelley College
Tues	13/6/23	SMS (9.30-12pm) KMS (1-3.30pm)	KS2	KWIK CRICKET TOURNAMENT	Skelmanthorpe Cricket Club
Tues	20/6/23	9.30-11am	KS2	ROUNDERS TOURNAMENT	Shelley College
Tues	27/6/23	9.30-12pm	YR 3	GET ACTIVE MORNING	Shelley College
Tues	4/7/23	9.30-12pm	YR 4	GET ACTIVE MORNING	Shelley College
Tues	11/7/23	1-3pm	YR 6	MIDDLE SCHOOL ROUNDERS CUP	Shelley College

Example of Music Clubs we offer!

Music – Half Term 2

	Monday	Tuesday	Wednesday	Thursday	Friday
Lunchtime - Years 11, 12 + 13	Practice Rooms (Yellow Week only) Composition in D38 (Yellow Week only)	Practice Rooms (Blue Week only) Composition in D38 (Yellow and Blue week)	Practice Rooms (Blue Week only) Composition in D38 (Blue Week only)	Practice Rooms (Blue Week only) Choir with Mr Bradnum 	
Lunchtime - Years 9 + 10		Guitar/Ukulele Club 	Practice Rooms (Yellow Week only)	Practice Rooms (Yellow Week only) Choir with Mr Bradnum 	Practice Rooms (Blue Week only)
After School	Practice Rooms (all years) 3 – 4pm by arrangement with a teacher Soul Band 3.15 – 4.15pm (invite only) 	Practice Rooms (all years) 3 – 4pm by arrangement with a teacher	Practice Rooms (all years) 3 – 4pm by arrangement with a teacher GCSE Music Intervention 3 – 4pm 	Practice Rooms (all years) 3 – 4pm by arrangement with a teacher	Practice Rooms (all years) 3 – 4pm by arrangement with a teacher GCSE Music Intervention 3 – 4pm 

Boxing Club

Every Tuesday lunch time, we offer a lunch time Boxing Club with a professional Boxing Coach. It is open to all year groups and creates a safe, fun, skilled environment to try out a highly disciplined sport.

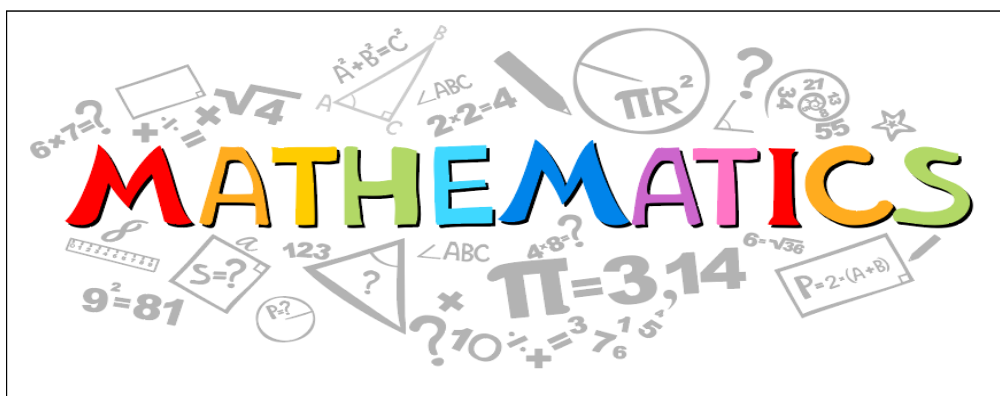


The Maths Challenge!

The Intermediate Mathematical Challenge is a 60-minute, multiple-choice Challenge.

It encourages mathematical reasoning, precision of thought, and fluency in using basic mathematical techniques to solve interesting problems.

The problems on the Intermediate Mathematical Challenge are designed to make students think and work alongside their GCSE studies stretching our most able students.



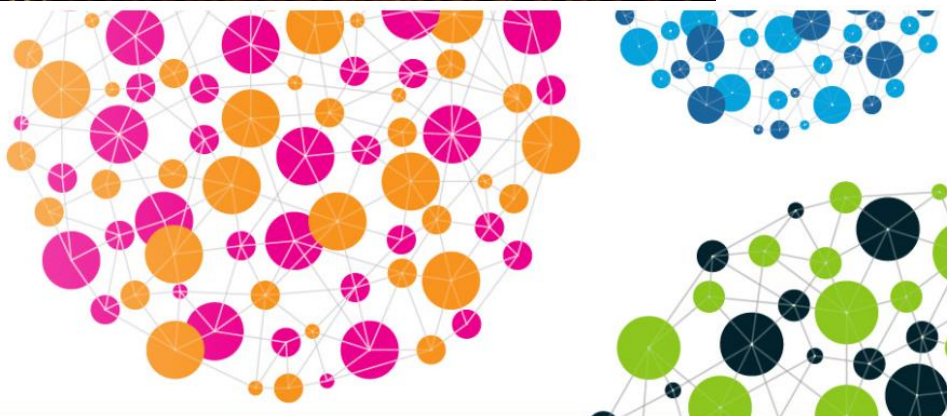
SHC British Science Week!

During British Science Week (10-19 March), Shelley College will be putting on a large number of activities to offer all students a chance to engage with Science beyond our curriculum. As a science department, we all feel passionately about our subject and want to ignite a sense of intrigue and wonder in our students.

The theme this year is CONNECTIONS and we will have an amazing show on Monday 13th March from Wonderstruck Science which will kick the week off with a bang! Then we will have visitors from local universities and businesses in to show the cutting-edge work that they are doing. Also, our very own Post 16 students will be planning and running activities in every break and lunchtime. The school will be fully given over to science, technology, engineering and maths in most fun and engaging way possible. It will be festival of all things STEM with the aim of raising student interest and aspirations in the science.



10-19 March
**British
Science
Week
2023**



British Science Week is a ten-day celebration of science, technology, engineering and maths. This year's theme - connections!

Art Clubs!

- Year 11 PP boys Graffiti workshop (in school) in Term 2.
- Year 9 - Xmas Card making for the community - Dec 2022.



The Technology Rotary Tournament

This is a competition held between all schools in Kirklees. Teams of students from years 9, 10 and 12 are invited to investigate a design problem and use their practical skills to design, make and test their own prototype. The competition encourages team skills as students have different responsibilities and roles on the day, present their ideas to judges. All work is completed by students without teacher support. Projects in the past have included building a mini dragster or pulley system.

The competition takes place in April 2023.



The Annual Christmas Showcase!

This annual Christmas extravaganza is not to be missed! It is a great opportunity for students to perform as a soloist, as part of a band or larger ensemble. These ensembles include Soul Band, Choir and the Year 9 Dance Company. The showcase features music and dance with performances from all year groups. We use a professional sound company and lighting company and we perform to lower school, friends, family and First Schools. It is a fantastic opportunity for students to show off their amazing talents!



Tick off the stars you complete!	SERVICE	CHARITY, COMMUNITY AND CULTURE	HEALTH, WELL BEING AND SAFETY	OPPORTUNITY	LEADERSHIP	AWARDS AND EXCELLENCE	REGULAR ATTENDANCE AT AN AFTER-SCHOOL ACTIVITY
BRONZE  To achieve the BRONZE SHC Scholars award, you must meet ONE criterion in each of the 7 standards (SCHOLAR)	Help a member of staff, another student or a parent with anything they may need. ☆	Raise money for charity or a community project either inside or outside of school. ☆	Have at least 90% attendance at PD Time with your Personal Development (PD) Mentor. ☆	Attend one daytime trip or visit during the academic year (academic or cultural). ☆	Take a lead role in and be a significant part of a lesson's structure (evidenced by staff). ☆	You have received a positive phone call home or above 150 achievement points in a half term. ☆	Attend a sporting after school club for six weeks. ☆
	Play a role in supporting an after-school activity through providing a service to staff/parents/Community. ☆	Take part in an event which raises awareness of a charity or community project e.g., Race for Life. ☆	Successfully complete the 'Cornerstones' curriculum package with your PD Mentor including all elements of PSHE such as mental health awareness and how to stay safe outside of school. ☆	Take part in an event outside of school such as a visit to the local middle or first schools. ☆	Make a positive contribution as office runner. ☆	Receive an academic, sporting or cultural award from school e.g. The Brilliant Club, The Speakers Trust Challenge, The Maths Challenge. ☆	Attend a creative after school club for six weeks (e.g., Music, Dance, Drama, Art). ☆
	Get involved with the Service section of the Bronze Duke of Edinburgh's Award. ☆	Donate old school uniform/PE kit/books, toys, games to school for the benefit of the school community. ☆	Take part in a fitness activity either in school or outside school at least once a week for a half term. ☆	Take part in Sports Day. ☆	Take part in a form activity which is seen by a wider audience. ☆	Represent the school in a team or individual sport, cultural or academic competition. ☆	Attend at least 6 academic after school intervention or tuition sessions in a term. ☆
	Help teachers organise an event for other students either inside or outside of school. ☆	Successfully complete the 'Cornerstones' curriculum package including understanding different religious beliefs, faiths and cultures. ☆	Support staff in raising awareness of the importance of mental health, the LGBTQ+ community or any other current campaigns. ☆	Play an active part in British Science week by going to the live shows! ☆	Deliver/present or showcase in a year group assembly e.g., playing a musical instrument/singing/sharing important messages. ☆	Receive regular, substantial praise in your books in a number of different subjects over a term (identified by staff and sent to your PD mentor). ☆	Attend an out of school club for a sustained period and no less than 6 weeks (show evidence to your PD mentor). ☆
SILVER  To achieve the SILVER SHC Scholars award, you must have achieved the BRONZE award AND meet ONE criterion in each of the 7 standards (SCHOLAR).	Be a tour guide at an open evening event in the academic year. ☆	Run a fund-raising activity in school which benefits a charity or community project. ☆	Have at least 95% attendance at PD Time with your PD Mentor. ☆	Attend an overnight cultural trip or visit during the academic year. ☆	Help your student manager to organise a year group assembly. ☆	Represent the county in a team or individual sport, cultural or academic competition. ☆	Help your student manager or other staff set up a new extracurricular activity. ☆
	Complete the Service section of the Bronze Duke of Edinburgh's Award ☆	Organise the collection of old school uniform/PE kit/books, toys, games to school for the benefit of the school community. ☆	Regularly attend a fitness activity either in school or outside school at least once a week for a full term. ☆	Organise an event outside of school such as a visit to the local middle or first schools with support from staff. ☆	Take a lead role in a Duke of Edinburgh activity such as a walk/setting up camp. ☆	Evidence where you have made substantial effort in and out of class in a number of subjects including reading and literacy. ☆	Attend a sporting or creative after school club for a full term (e.g., Rugby, Badminton, Music, Dance, Drama, Art). ☆
	Attend Eco Club for at least 6 sessions and support with helping the school recycle and clear litter. ☆	You support the community through events such as sports leadership afternoons with local pyramid schools. ☆	Play an active role in raising awareness of the importance of mental health, the LGBTQ+ community or any other campaigns. ☆	Be part of a performance or concert organised in school such as the summer showcase. ☆	Be a sports leader working with pyramid schools across Kirkcaldy and supporting our PE department and the local community. ☆	You have received more than one recognised award either inside school or outside of school. ☆	Attend an academic after school intervention/tuition session for a full term. ☆
	Support Year 8 students during their transition period up to SHC. ☆	Be actively engaged in the Cornerstones curriculum package including understanding different religious beliefs, faiths and cultures. ☆	Be actively engaged in the Cornerstones curriculum package including all elements of PSHE such as sexual health, drugs and alcohol. ☆	Sing, dance, act or play music in an assembly. ☆	Play an active role in the student leadership team. ☆	Be on track to achieve the Bronze Duke of Edinburgh award. ☆	Support staff in advertising extracurricular opportunities through assemblies and social media! ☆
GOLD  To achieve the GOLD SHC Scholars award, you must achieve the bronze and silver award AND meet ONE criterion in each of the 7 standards	Be a leader of tour guides showing them how to conduct themselves in front of visitors within school. ☆	Lead on organising a collection in aid of a charity and/or community project. ☆	Organise a mental health awareness event alerting other students to mental health issues and where to seek help. ☆	Attend more than one overnight trip or visit both in the UK or abroad (academic AND cultural). ☆	Be a leader of a sporting, cultural or academic 'team' event. ☆	Represent the region or country in a team or individual sport, cultural or academic competition. ☆	Lead a new extracurricular activity (with a staff member present) including communication with staff and students. ☆
	Supporting a staff member in the organisation of an after-school activity. ☆	Raise awareness with younger students about understanding different religious beliefs, faiths and cultures. ☆	Be an ambassador for a campaign such as LGBTQ+ rights. ☆	Regularly showcase your talent in school shows and concerts. ☆	Lead a project of your choice within school AND demonstrate its impact. ☆	Have a flawless behaviour and attitude record on ClassCharts ClassCharts . ☆	Attend a sporting or creative after school club for a full academic year. ☆
	Complete the Service section of the Silver Duke of Edinburgh's Award. ☆	Organise a charity fund raising event for the local community. ☆	Attend a fitness activity/class twice a week for the full year. ☆	Volunteer to help lead a high-profile school event such as the summer showcase. ☆	Go through the application process for the position of head boy/girl. ☆	Be on track to achieve the Silver Duke of Edinburgh award. ☆	Attend a variety of academic after school sessions throughout the academic year. ☆
	Take part in a service activity outside school such as scouts or police/army cadets for at least 6 weeks. ☆	Visit local middle schools to help staff with Year 8 transition. ☆	Do further reading or support younger students on any elements of PSHE or how to stay safe outside of school. ☆	Volunteer to support other year groups on trips and visits as a school ambassador. ☆	Be a lead member of the student leadership team and evidence your impact. ☆	Achieve a prestigious award outside of school which you are immensely proud of. ☆	Create an advertisement for an extracurricular activity that you attend to raise its profile within school. ☆
PLATINUM 	For the platinum award, you need to: have met TWO extra criteria for all 7 standards (SCHOLAR) in the gold award (tick 9 stars instead of 7!) <div>  At the core of our SHC Scholars Club lies the 'British Values': Democracy, The rule of law, Individual liberty, Mutual Respect and Tolerance  </div>						